

32 Meadway Court The Boulevard  
Worthing, BN13 1PW  
Asking price £230,000





## 32 Meadway Court The Worthing, BN13 1PW

This immaculately finished 2-bedroom second floor apartment is conveniently located close to local shops, schools, and public transport. Both the kitchen and bathroom are of particular quality, the kitchen now "open plan" creating a generous breakfast bar area with utility room adjacent. With many dual aspect rooms, it is light and airy. Both bedrooms are large doubles. The property has a compound garage and is offered with NO CHAIN.

Communal Entrance Hall

Entrance Hall

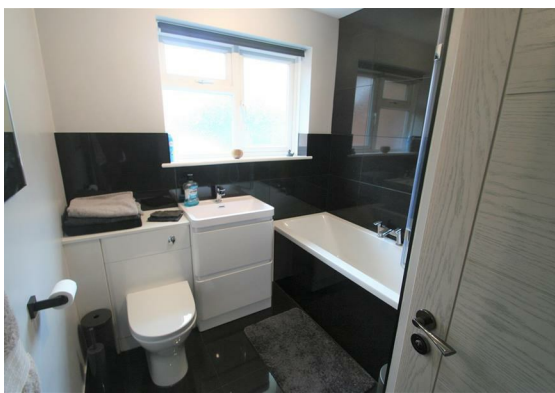
Lounge  
16'11 x 12' (5.16m x 3.66m)

Kitchen/Breakfast Room  
12'2 x 10'5 (3.71m x 3.18m)

Utility Room

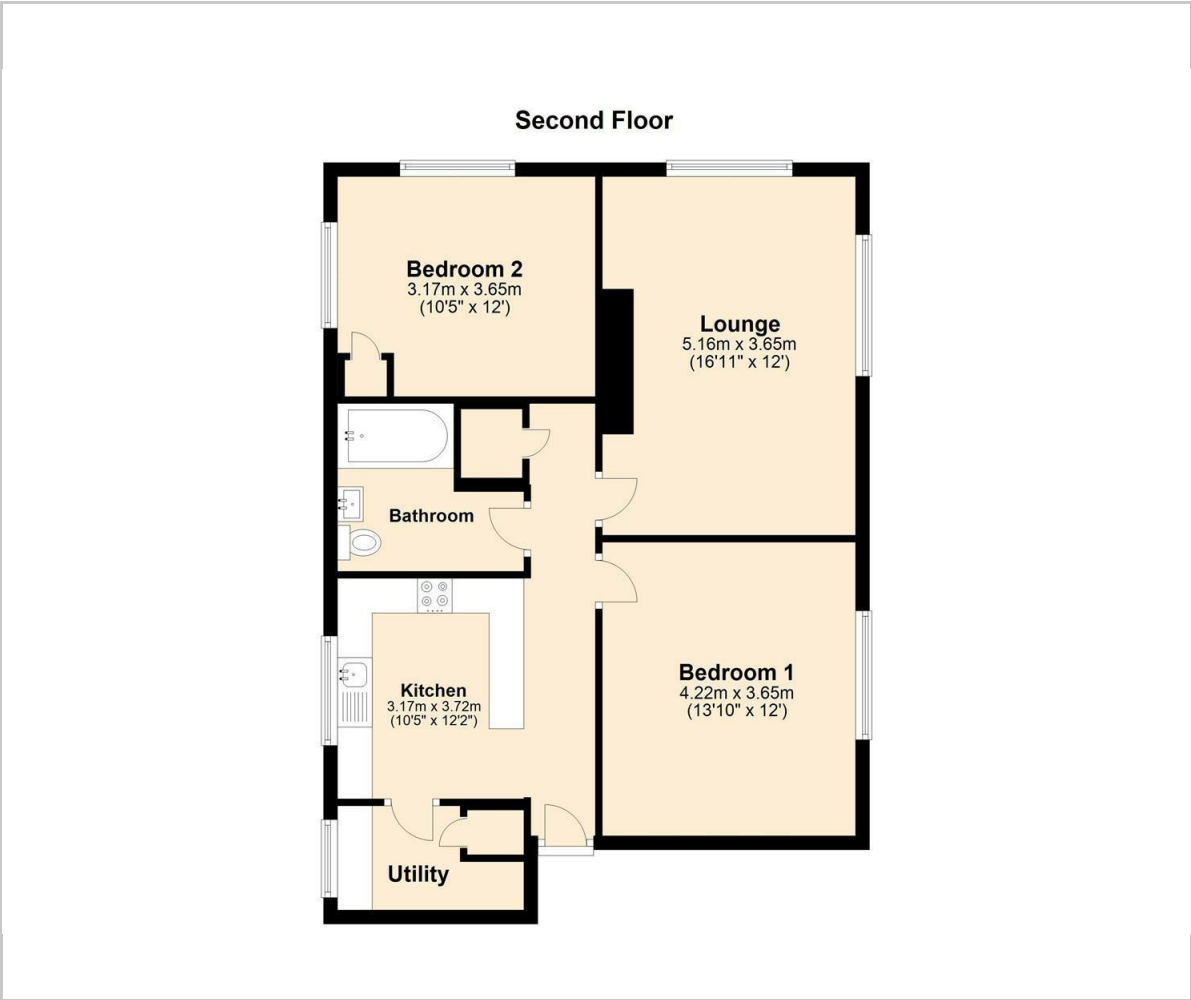
Bedroom 1  
13'10 x 12' (4.22m x 3.66m)

Bedroom 2  
12' x 10'5 (3.66m x 3.18m)





Floor Plan

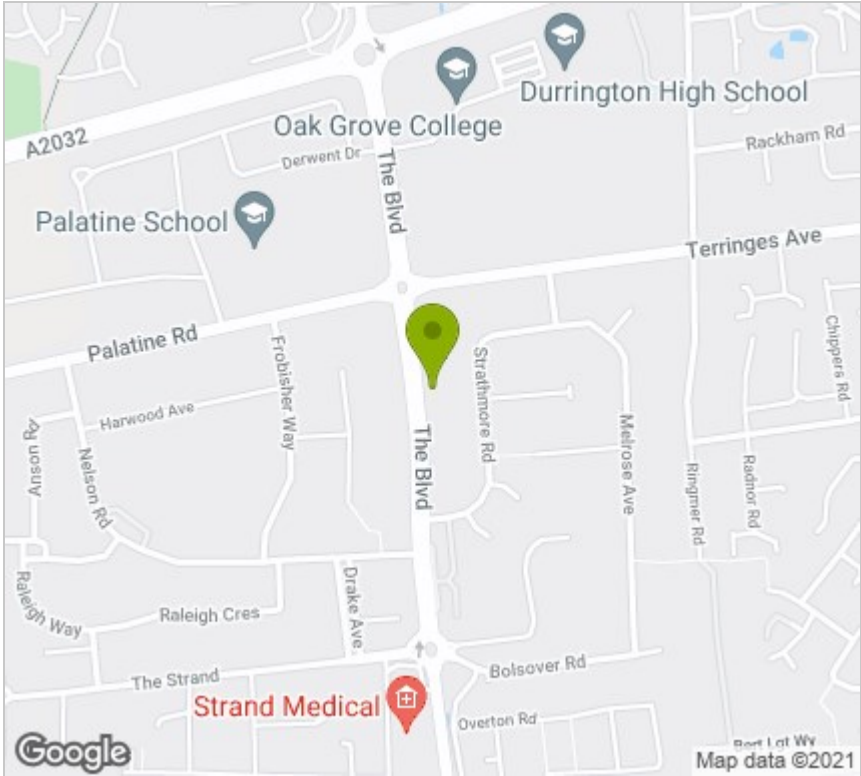


Viewing

Please contact our Worthing Office on 01903 958770 if you wish to arrange a viewing appointment for this property or require further information.

These particulars, whilst believed to be accurate are set out as a general outline only for guidance and do not constitute any part of an offer or contract. Intending purchasers should not rely on them as statements of representation of fact, but must satisfy themselves by inspection or otherwise as to their accuracy. No person in this firms employment has the authority to make or give any representation or warranty in respect of the property.

Area Map



Energy Efficiency Graph

